

## **SYNERGY NORTH- Power Line Forestry Maintenance Program**

Dear Customer,

With a distribution network of over 1,400 kilometers of overhead power lines, line maintenance is one of our top priorities. Our SYNERGY NORTH Forestry Team works to manage this leading cause of power interruptions by maintaining or removing trees along utility easements. Forestry maintenance helps to reduce unplanned outages and decrease potential safety hazards in our communities. Maintenance of our power lines is important so that we can provide our customers with the reliable electricity that we all depend on.

You are receiving this letter as notification that right-of-way forestry maintenance is scheduled for a section of power line in which your property is located. This upcoming work is restricted to the main hydro line. Power lines that serve only your home or business are considered the responsibility of the property owner to maintain. If you are a tenant, we ask that you forward this letter to the property owner.

This work will be completed by a trained and certified contractor under direction of SYNERGY NORTH and will follow approved utility line clearing standards.

**Limbs and small branches will be cleaned up by the contractor but any larger pieces (greater than 4 inches or 10cm in diameter) generated from tree trimming or removal will be left on your property.**

### **SYNERGY NORTH does not remove stumps.**

Species such as lilac, dogwood or other low growing trees will not normally be cut. Larger deciduous species such as maple, ash or birch will be pruned clear of the power line or removed if they cannot be pruned or are unsafe. Conifers such as spruce, balsam fir or pines will be pruned if possible. Conifers that are planted directly under the power lines, will be removed if they are interfering or will be interfering with the power lines within 3-5 years.

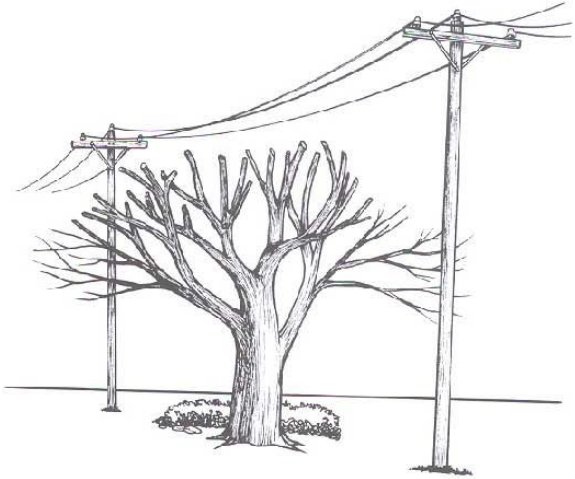
- **SYNERGY NORTH line clearing contractors will no longer top City trees.**
- **Homeowners have the option to have privately owned trees topped upon request.**
- **Vegetation around power lines will be cleared back to at least 3 meters.**

If you have any questions regarding the work planned for your area, please leave a message at 343-1176 and I will return your call as soon as possible. If you prefer, I can also be reached via email at: [cpereira@synergynorth.ca](mailto:cpereira@synergynorth.ca)

**Customers have 5 days to contact SYNERGY NORTH regarding tree trimming from the time of notification, before work commences.**

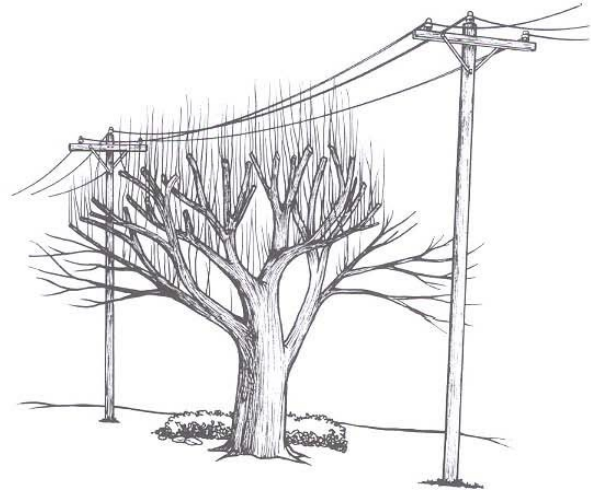
Chris Pereira  
Utility Arborist Coordinator  
SYNERGY NORTH

## SYNERGY NORTH Forestry Maintenance Practices



Rounding over, topping, or stubbing branches (left) severely damages trees and is not an approved practice at SYNERGY NORTH. Trees respond to these practices with rapid re-growth of weak branches (right) that grow directly back toward the power lines.

**For more information about our Forestry Maintenance Program visit [synergynorth.ca](http://synergynorth.ca).**



SYNERGY NORTH Forestry Maintenance program goals are to provide safe clearances between power lines and trees for a minimum period of seven years.

The example of approved utility tree trimming practices (right) will provide these safe clearances and minimize negative effects to the tree.



Available 24/7

**1.800.400.2255**  
**OntarioOneCall.ca**